



Goals and Objectives of the Minnesota Horse Council

- ♦ Promote and/or support equine educational activities
- ♦ Improve communication in all horse related activities with the general public
- ♦ Gather information of value to equine related activities
- ♦ Distribute gathered information as appropriate
- ♦ Provide expertise, consult and advise
- ♦ Establish, develop and enhance equine trails and other infrastructure and encourage their prudent use

2009 BOARD OF DIRECTORS OFFICERS

President

Mark Ward ♦ 651-436-6557
markward@windyridgeranch.com

1st Vice President

Darrell Mead ♦ 763-420-3697
darrellmead@comcast.net

2nd Vice President

Tracy Turner ♦ 651-351-7206
turner@anokaequine.com

Secretary

Dawn Moore ♦ 952-949-6659
dmoore834@comcast.net

Treasurer

Tim Bonham ♦ 612-721-1007
t-bonham@scc.net

DIRECTORS

- Carol Dobbelaire.....763-684-0709
- Glen Eaton.....952-922-8666
- Teresa Hanson.....763-434-2799
- Judy Jensen.....763-972-6397
- Trina Joyce.....612-729-7798
- Sue McDonough.....651-699-8117
- Marian Robinson.....763-588-0297
- Jan Schatzlein.....612-825-2459
- Missie Schwartz.....763-428-7532
- Tom Tweeten.....952-226-4190
- Christie Ward.....651-603-8702
- Lynn Wasson.....320-398-8085

ANOTHER FANTASTIC YEAR AT EXPO!

Another Minnesota Horse Expo has come and gone. With the pleasant weather and the great international clinicians, horses, vendors and PRCA Rodeo, people came in record numbers on Friday and Saturday. Sunday attendance numbers were good even with a light rain. People were busy shopping, filling clinician and demonstration areas, talking with other horse people, viewing the nearly 50 different beautiful breeds of horses, taking a carriage ride, riding the horses or ponies, and even trying their hand at tossing a few horseshoes. The three by five block area of the fairgrounds used by the Expo was as busy as during the State Fair. The Horse Barn was full of horses and most of the vendor booths were filled. With the economy the way it is, you would not know it by the crowd at the Expo. The bottom line attendance figures are not yet available but estimates look like the attendance is up about five percent over 2008.

I want to thank all of the Directors and Staff of the Minnesota Horse Expo, the State Fair Staff, and the Volunteers who worked so hard to make this event the success that it was. The Directors and Staff of the Minnesota Horse Expo work hard throughout the years to put each Expo together. In September of each year, the Minnesota Horse Expo turns the profits generated by the past Expo over to the Minnesota Horse Council which in turn is returned back to the horse community in the form of scholarships, grants, trail maintenance, and other Minnesota Horse Council activities. A check for \$225,000 for the proceeds of the 2008 Minnesota Horse Expo was given to the Minnesota Horse Council bringing the total to over \$3 million.

Glen G. Eaton
President, Minnesota Horse Expo

Stacy Westfall and friend



Photo by Marilyn Blumer

Susan Harris

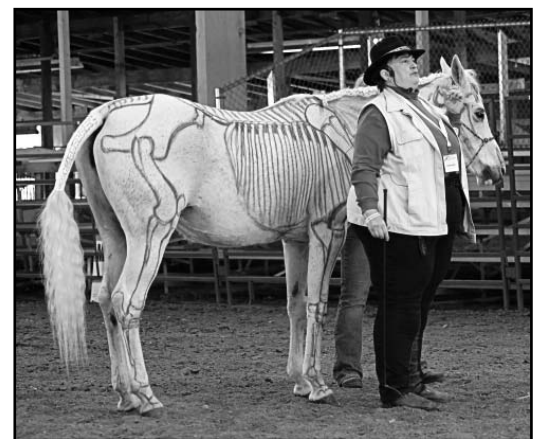


Photo by Whisperedlitany Photography



MORE EXPO PICTURES



Rocky Mountain Horse Group



Shire at Expo



Grace Reading
Photo by Allison Goodman



*Learning to Rope
with the Cactus Cowboys*



Shopping - Shopping - Shopping

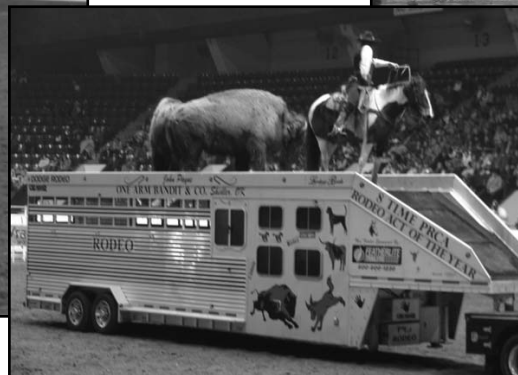
PRCA RODEO EXCITEMENT AT EXPO!



Cowboys Wrestled Steers



*Broncs Caused
Lots of Excitement
at the Rodeo*



The "One-Armed Bandit"



Minnesota Horse Council News

A Message to Minnesota Horse Owners

By Mark Ward, President of the Minnesota Horse Council

Over the next few months, our state legislators will be considering changing tax laws pertaining to horse breeding and boarding operations. The vitality of our horse industry will be threatened if the wrong changes are made. We must work together to educate our Minnesota legislators regarding how detrimental the wrong changes would be for equine operations and for the economic force they represent in Minnesota.

The problem—

The current legislative session ended with confusion regarding how the tax laws for horse farms should be interpreted. The legislature voted for a study by the commissioner of revenue “summarizing the current treatment...[of real property used for horse breeding and boarding activities]...and making recommendations for needed or useful law changes.” This study is due to be completed by Feb 1, 2010, when the next legislative session will make more informed decisions about the tax code. The MHC recognizes the importance of making sure that complete and correct information is made available to our legislators. That information will be pivotal in creating “useful law changes” and in preventing damaging tax law changes.

How damaging could the wrong changes be? Already, in Washington County, many horse facilities have received tax statements reclassifying their horse-related property as commercial instead of agricultural resulting in tripled taxes. This could be the case all over Minnesota and the ripple effect through our horse industry will be huge and detrimental. If horses are not considered livestock in our tax code, the ramifications for future law changes could go well beyond tax problems.

The solution—

A united voice must be heard that makes it clear that horse husbandry is, as it has been for a long time, an agricultural pursuit that should be taxed fairly and according to the same rules that apply to other livestock activities.

We who are in the horse business know what it means to be involved in large-animal husbandry. We feed and care for thousand-pound barnyard animals, produce acres of forage, purchase mountains of hay and grain, send tons of organic fertilizer to croplands, manage feedlots, employ farm laborers, and, in general, participate in the manifold of agricultural activities commonly associated with the raising and care of all types of livestock. Our economic impact on the local agri-business is plain to us. It comes in and out of our own pocketbooks. But this is a sector of Minnesota's economy not well documented or advertised and therefore not well understood or recognized by state legislators who are now in the process of planning the tax classification of our financial future. Hence, our state legislators need to be educated.

To help, the Minnesota Horse Council is launching a program to explain to Minnesota legislators the full and positive statewide economic impact resulting from equine husbandry and the wide range of equine-related activities. A secondary goal is to find out and explain the negative impact that will occur if, as some legislators and tax assessors would have it, horses are no longer considered livestock and if horse properties are changed from agricultural to commercial tax status.

To serve these goals we are planning these four projects:

- 1) Professional lobbying effort to promote the interests of the equine industry in the current legislative-mandated study and in the decision making process that will follow,
- 2) University of Minnesota Department of Applied Economics study regarding the impact of drastically higher taxes for the equine industry,
- 3) USDA NASS (National Agricultural Statistics Service) statewide survey of the equine industry in Minnesota
- 4) University of Minnesota Extension economic impact analysis of the Minnesota equine industry (which will be based on the results of the NASS survey),

These are long-term and expensive projects. The first two projects can have a positive effect on the current taxation legislation. The lobbying effort is underway and we are confident that we will gain representation at the legislative study committee meetings. At this time, we are in the very preliminary stage of asking the University of Minnesota to perform a tax impact study. The second two projects will take longer and to complete them we will probably need additional financial support. A full NASS survey would take over a year and the economic analysis an additional three to six months. The long term benefits of documenting the type and importance of the horse industry's economic contribution to the state certainly merit a substantial investment of time and money.

The Minnesota Horse Council's leadership and financial support for these projects is key to protecting the vitality of the Minnesota horse industry. There will come a time, though, when Minnesota horse enthusiasts at large will be needed as contributors, as email authors, telephone callers, and personal visitors to their elected officials, making their position clearly understood.

I am thankful to Tracy Turner and Tom Tweeton from the MHC legislative committee, attorney Allison Eklund, and University of Minnesota Equine Specialist, Krishona Martinson, for their help in planning and carrying forward these efforts.

I will keep you informed as our program proceeds and I hope to receive your support to create a united voice when it is required.

Mark Ward

For more info on the tax change study see:
<https://www.revisor.leg.state.mn.us/laws/?id=88&doctype=Chapter&year=2009&type=0> Article 2, Section 47, Subsection 1 and 2

Equine Economics: Optimizing Horse Health and Management on a Budget

Julie Wilson, D.V.M. and Krishona Martinson, Ph.D., University of Minnesota



Owning a horse is a major responsibility, and a significant investment of both time and money. Most owners do not generate income from their horse, but are intent on spending time with their equine companion. During tough economic times, horse owners need to explore and implement options to reduce costs. Most cost reducing opportunities fall in the area of preventative medicine and education. Specifically, horse owners can reduce costs associated with management, veterinary care, hoof care and nutrition.

MANAGEMENT

There are several things horse owners can do to minimize costs associated with horse management.

Housing. Healthy horses thrive outdoors and only require shelter from adverse weather, including excessive heat or cold (below 18° F) and freezing rain. Keeping a horse outdoors with access to a loafing or run-in shed saves the cost of building and maintaining a barn as well as labor expenses associated with stall cleaning. Although it is not practical to keep all horses outdoors, healthy adult horses who are not in a year-round training program are good candidates.

Horses that get along with herd mates are less likely to fight, become injured and develop stress related diseases like ulcers. If multiple horses are housed together, study their social interactions.

Determine which horse is dominant and if all horses get along with each other. If you add or remove a horse from the herd, expect the herd dynamics to change. It is usually more cost efficient to keep a horse on the owner's property or farm compared to boarding. Boarding is necessary for some horse owners, but can be expensive. Consider ways to decrease boarding costs, including cleaning stalls, feeding and assisting with weekend chores.

Cleanliness. Flies, mosquitoes and ticks are responsible for a number of bacterial and viral diseases of horses. Reduce the risk (and expense) of these diseases by discouraging these insects and ticks in your horse's environment. Remove and spread or compost manure promptly to reduce fly breeding areas. Minimize pools of standing water, including water standing in old tires, unused buckets and drainage areas. Outdoor water tanks should be cleaned weekly. Brushy areas in the pasture and along the fence lines should be removed, and tall grass should be mowed to reduce tick populations. If a horse is housed in a wooded area, a long-acting fly, mosquito and/or tick repellent can be used.

Safety. An ounce of prevention is worth a pound of cure. Improving barn safety can prevent accidents and unnecessary injuries. Remove all barbed-wire fencing and cap T-posts. Avoid corners where horses can become trapped by other herd mates. Make sure feeders, waterers and other necessary items in your horse's pen are in good working condition and free of sharp edges, nails or rust. Check that paddocks and pastures are free of poisonous plants as well as large rocks, stumps, brush, holes and debris that could cause injury.

Grading high traffic areas to promote good drainage will result in less mud as well as lower the likelihood of losing shoes or developing skin disease of the pasterns. Consider passive solar options for heating outdoor water tanks. Manage dust to reduce airway irritation and the risk of *Rhodococcus equi pneumonia* in foals.

Bio-security. Think about bio-security and how it can help maintain your horse's health. To reduce the risk of some diseases, consider having visitors wash hands before handling horses. If coming from another farm, visitors should change boots and clothing, particularly if there has been an illness or disease on the other farm. Restricting and/or reducing visitor interactions with horses are other bio-security methods to consider implementing.

Viral respiratory diseases and strangles are most often transmitted between horses through respiratory secretions. When traveling with horses, avoid nose to nose contact, as well as sharing water and grain buckets or bits with other horses. Inspect off-site stalls and paddocks and ensure they are clean, sanitized and free of injury opportunities before housing your horse. Avoid farms or show grounds where respiratory diseases, particularly strangles, have been recently confirmed.

Tack. A poor-fitting saddle can lead to performance problems and back soreness. Saddle choice should reflect the preferred discipline as well as horse and rider comfort. A saddle should have adequate withers and spine clearance, even distribution of weight and contact along the panels, and front to back balance. Saddle fit may change as the horse's body condition changes, particularly if the horse develops more muscling along the top line. Periodic reflocking and keeping the leather in good condition will promote saddle longevity. Saddle fitting is not simple. Consult an expert before purchasing a saddle.

Manure management. Manure management and removal can be a significant cost for some horse owners. Manure is a valuable resource that is useful for gardeners and farmers. Contact local farmers and gardening organizations and promote your manure as a valuable resource.

Breeding. Unless a mare or stallion has exceptional conformation and an outstanding performance record, planning a foal that may be difficult to market is unwise and expensive. Consider purchasing or adopting a weaned foal to experience raising and training a foal.

Insurance and liability. Make sure your home owner's insurance covers liability associated with your horse operation. Consider having an equine attorney assist with pertinent legal agreements. Major medical and/or other insurance types may make economic sense for some horses, particularly those that represent a sizeable emotional or financial investment. Being properly prepared and covered prior to an emergency or accident is usually more cost effective.

Equine Economics--continued on page 7

Unwanted Horse Veterinary Relief Campaign Aids More Than 1,400 Horses



Veterinarians and equine rescue and retirement facilities are teaming up to help rehabilitate, revitalize and, ultimately, find new homes for America's unwanted horses through the Unwanted Horse Veterinary Relief Campaign (UHVRC). Although the campaign was launched only four months ago, the UHVRC already has provided aid to more than 1,400 horses across the nation.

Established in December 2008 by Intervet/Schering-Plough Animal Health and the American Association of Equine Practitioners (AAEP), the UHVRC is committed to protecting the health of unwanted horses by donating equine vaccines to qualifying equine rescue and retirement facilities.

"The Unwanted Horse Veterinary Relief Campaign has been tremendously successful so far in accomplishing the goal of providing equine rescue and rehabilitation facilities with the resources they need to promote the health and welfare of the horses in their care," says Cynthia Gutierrez, DVM, Equine Technical Services Veterinarian for Intervet/Schering-Plough Animal Health. "To date, Intervet/Schering-Plough Animal Health has donated 1,470 PreveNile® West Nile virus vaccines, 1,470 Prestige® V vaccines and 1,380 EquiRab™ rabies vaccines through the UHVRC to equine rescue and retirement facilities across the country."

The widespread need for a program like the UHVRC is evident from the more than 100 applications received by the program since Jan. 1, 2009, from eligible equine rescue and retirement facilities. Applications for more than 4,500 horses have been submitted by facilities in 35 states.

"It is extremely encouraging to see so many rescue and retirement facilities and veterinarians working together to apply for aid from the Unwanted Horse Veterinary Relief Campaign," says Dana Kirkland, Industry Education and Development Coordinator for the AAEP. "We are thrilled that we have been able to donate vaccines for more than 1,400 horses in need thus far; however, demand still exceeds supply. We look forward to accommodating more facilities and their horses as the program continues to grow."

Getting Involved

Equine rescue and retirement facilities should work with an AAEP-member veterinarian to complete and submit an application, the facilities checklist and the equine vaccine order form to receive complimentary Intervet/Schering-Plough Animal Health equine vaccines.

Three of Intervet/Schering-Plough Animal Health's equine vaccines are available through the UHVRC program: PreveNile West Nile virus vaccine; EquiRab rabies vaccine; and Prestige V (KY93, KY02 and NM2/93 flu strains, EHV-1, EHV-4, EEE, WEE and tetanus).

Equine facilities that follow the AAEP Care Guidelines for Equine Rescue and Retirement Facilities and have a not-for-profit 501(c)(3) tax-exempt status are qualified to receive support from the UHVRC. To download an application and the AAEP Care Guidelines or to learn more about the UHVRC, visit: www.UHVRC.org.

A portion of all Intervet/Schering-Plough Animal Health equine vaccine sales beginning Dec. 1, 2008, has gone to support the UHVRC. To learn more about Intervet/Schering-Plough Animal Health's full line of innovative, high-quality equine health products, visit www.intervetusa.com.

UNIVERSITY OF MINNESOTA
EXTENSION

QUARTERLY LUNCH AND LEARN WEBINAR

Wednesday, July 15th ♦ Noon to 1:00 pm

Topic: Manure Management and Composting

Speaker: Betsy Wieland, Hennepin County Extension Educator

Webinar link will be available in July

FALL REGIONAL HORSE OWNER PROGRAMS

Saturday, October 2, 2009 ♦ 9:30 am to 4:00 pm
University of Minnesota Leatherdale Equine Center
St. Paul, MN

Program theme is Equine Metabolic Syndrome and Genetics
Program sponsored by a USDA NRI Grant

Saturday, October 24, 2009 ♦ 1:00 to 4:00 pm
Red Horse Ranch Arena ♦ Fergus Falls, MN

Saturday, November 14, 2009 ♦ 1:00 to 4:00 pm
Watertown Middle School ♦ Watertown, MN

Agendas and Registrations for Fall 2009 Programs
available in August 2009

GET A DVM

Locate an AAEP-member veterinarian using the Get-A-DVM directly at www.aaep.org/dvmsearch. Whether you're traveling, relocating or looking for a veterinarian for your first horse, this search engine will help you connect with a practitioner dedicated to the highest standard of equine medical care.

This service is brought to you through a partnership between the American Association of Equine Practitioners (AAEP) and Bayer HealthCare Animal Health



Bayer HealthCare
Animal Health Division



AMERICAN HORSE COUNCIL
Your Unified Voice in Washington

202-296-4031 ♦ www.horsecouncil.org



AHC ACTION ALERT

The AHC needs your help to save the Recreational Trails Program

The AHC is working to preserve the Federal Highway Administration's Recreational Trails Program. If Congress does not take action this year this program could no longer be available to recreational riders.

The RTP provides funding directly to the states for recreational trails and trail-related facilities for both non-motorized and motorized recreational trail uses. It was created in 1991 as part of the Intermodal Surface Transportation Efficiency Act of 1991. The RTP will have to be re-authorized in the next national surface transportation program bill if it is to continue.

Since its inception the RTP has provided approximately \$730 million for thousands of state and local trail projects across the country, including many that benefit equestrians. RTP projects consist of construction, maintenance and restoration of trails and trail related facilities as well as the acquisition of easements or property for trails.

The RTP is one of the few sources for federal funding of trail projects that are not on federal land. The program is a great resource for equestrians to fund projects in their state and local parks. Congress is expected to begin work on the next 5 year highway bill very soon. The AHC, in conjunction with a broad coalition of recreational trail users, is requesting that Congress not only re-authorize the RTP, but also increase funding for the program to \$555 million to be spent over the five years of the bill.

The AHC urges all recreational riders to contact Congress and voice support for this program and let them know this program is important to the horse community.

You can download a sample letter at www.horsecouncil.org that can be used as a starting point for a letter to your Representative and Senators. You should personalize it with information about yourself and your state trails. Please fax or email it to your Representatives or Senators because regular mail must go through a long security process.

Contact information for your Representatives and Senators can be found at <http://www.house.gov/> and <http://www.senate.gov/>.

Please send copies of any emails, letters or faxes you provide to your Representatives or Senators to the AHC at bpendergrass@horsecouncil.org or fax to 202-296-1970.

The horse you get off is not the same as the horse you got on; it is your job as a rider to ensure that as often as possible the change is for the better.

~ Anonymous

AHC Urges Land Managers to Use Stimulus Funding for Equestrian Trails

The American Horse Council has asked the National Park Service (NPS), U.S. Forest Service (USFS), and Bureau of Land Management (BLM) to use stimulus funding for trails.

The American Recovery and Reinvestment Act of 2009 signed into law on February 17 appropriates over \$1.7 billion for the NPS, USFS, and BLM that can be used for the maintenance and construction of trails and other infrastructure improvements on public lands.

The AHC recently wrote to NPS Acting Director Dan Wenk, Chief of USFS Gail Kimbell, and BLM Acting Director Mike Pool urging the agencies to allocate a significant portion of stimulus funding to address the current backlog of needed infrastructure improvements on public lands, including maintenance and construction of trails and other facilities that are open to equestrians.

The AHC cited the importance of public lands and trails to recreational riders around the country and the economic impact of the recreational riding community on the national economy. "The recreational horse industry contributes \$11.8 billion a year directly to the economy and directly employs nearly 130,000 people nationwide. Indirectly the industry contributes an additional \$20.1 billion and generates another 307,000 jobs. That is significant and extremely important in these economic times," said AHC President Jay Hickey.

The NPS, USFS, and BLM have yet to finalize spending plans for this recently appropriated money. "An opportunity exists for equestrian groups to provide input to land managers in their states and communities on how this money should be spent," said AHC Legislative Director Ben Pendergrass, "and recreational riders must work with these federal agencies to ensure that equestrian trails are among the projects to benefit from these funds."

The AHC encourages members of the equestrian community who use these public lands to contact their local Ranger Districts, Forest Supervisors, BLM field or District offices and NPS Superintendents to work with them to identify projects beneficial to riders in their area. "This is a great chance to improve trails for equestrians and stimulate the economy," said Hickey.

Minnesota Horse
Expo 2010

APRIL 23 ♦ 24 ♦ 25

LITTLEFORK SADDLE CLUB ANNOUNCER'S STAND GETS A MAKEOVER WITH MHC GRANT

Everyone in the Littlefork Saddle Club is so grateful to the Minnesota Horse Council for funding our grant request. These pictures that show the dire need the cookshack/announcer's booth was in and also some needed repairs to the equipment shed. We were able to get a contractor to begin leveling the building and sheeting in the upstairs window openings before winter really hit. In the spring, the work continued in earnest. Our club is so excited to have the funds to make the needed repairs.



Littlefork Saddle Club's New and Greatly Improved Announcers Booth/Cookshack

It doesn't even look like the same building. What a HUGE improvement. Thanks again to the Minnesota Horse Council for their generous support!



MINNESOTA HORSEMEN'S DIRECTORY

The goal of the Minnesota Horsemen's Directory is to compile a comprehensive listing of horse-related services in and near the state so that horse-people can find relevant information quickly.

The Directory includes free listings--businesses and organizations can submit a listing for free. The Directory will be advertisement-free.

www.minnesotahorsemensdirectory.com

Equine Economics--continued from page 4

Tow-vehicles and trailers. Making sure tow vehicles and trailers are in good working condition can reduce the chance of accidents. Make sure all lights and brakes are working, tires are properly inflated, and ensure the trailer floor is solid and covered in rubber mats. Purchase a road-side assistance plan if you travel frequently with your horse. Have flares, a tire changing ramp, road-side emergency kit, and a human and horse first aid kit located in the trailer. Do not travel with opened, un-screened windows as debris can strike an eye, or a horse may try to escape. The Department of Transportation has additional information on hauling requirements and safety.

VETERINARY CARE

Have a good working relationship with a veterinarian. It is important to determine the extent and financial commitment a horse owner can absorb. These decisions should be made prior to an emergency involving a horse. During an emergency, it is common for a horse owner to approve procedures one cannot really afford. Communicating the emergency and financial plans to a veterinarian and others who care for your horse will help keep care and after-care affordable.

There are many benefits of a yearly veterinary examination. This visit should be planned with forethought on health issues and vaccine choices. A thorough physical examination will often find early signs of cancer, lameness or any other disease that is readily treatable if identified early.

In older horses, routine blood screening may be warranted to detect subtle signs of diminishing organ function. Core vaccines (tetanus, Eastern Equine Encephalomyelitis (EEE), Western Equine Encephalomyelitis (WEE), West Nile (WNV) and rabies), Coggins test, dental work and sheath cleaning (if necessary) should also occur at this time.

Taking a manure sample for a fecal egg count is a method to monitor the effectiveness of a deworming program. Egg counts can identify horses with higher populations of parasites. These horses should be dewormed more often. Horses with lower parasite populations can be dewormed less frequently, resulting in financial savings. Horses with no detectable parasite eggs may not need to be dewormed, but testing these horses should continue on a regular basis. Good manure management will reduce ingestion of parasites, resulting in better health and longer intervals between deworming.

If you own or have access to a trailer, consider trailering a horse to the veterinarian to save on farm calls.

Education. Research has shown that taking an active interest in and being involved with the daily care of a horse results in a healthier horse and reduced veterinary care costs. Become familiar with horse vitals (temperature, heart rate, etc.) and normal behavior. Changes in baseline vitals and behavior are usually early indicators of illness. Learn to give intramuscular shots and oral medications, and how to perform basic leg wraps.

*Equine Economics--continued in the July/August issue of
"For Horse's Sake"*

MINNESOTA HORSE COUNCIL BOARD MINUTES

April 12, 2009

Meeting Location: Nutrena Conference Room - Leatherdale Center U of MN St Paul

Board Members

Present: Glen Eaton, Darrell Mead, Dawn Moore, Missie Schwartz, Marian Robinson, Mark Ward, Trina Joyce, Teresa Hanson, Tom Tweeten, Jan Schatzlein, Lynn Wasson, Tim Bonham, Christie Ward, Carol Dobbelaire, Judy Jensen, Tracy Turner, Sue McDonough

Absent:

Members/Visitors: Duane Gaulke Jr., Jane Lafferier, Dan Dolan

I. Meeting called to order: 6:30 p.m. by Mark Ward

II. Introduction of Board Members/Visitors

Mark Ward introduced Duane Gaulke Jr. and Jane Lafferier.

III. Call for Additions/Changes to Agenda

Darrell Mead asked to include a Trail's report under Committee Reports.

IV. Treasurer's Report for March and April were distributed by Tim Bonham. The March 9, 2009 Balance Sheet was adjusted. On the first page, Net Worth, the line for Trails 2006 unused funds was changed from \$30,847.43 to \$847.43 to reflect the \$30,000 which had been paid out to the Forestville State Park for the day use site. Consequently, also adjusted were Total Liabilities, from 391,342.30 to 361,342.30 and Net Available Funds from \$379,807.49 to \$409,807.49. Carol Dobbelaire motioned to accept the March treasurer's report as amended. Christie Ward seconded, motion passed.

V. Approval of Minutes - Tim Bonham motioned to approve the March minutes with corrections, Darrell Mead seconded, motion passed.

VI. Secretary's Report - Dawn Moore reported there were 78 renewal reminders sent out and we are receiving responses already. The 2008 committee list is being passed around to be updated for 2009. There is exploration on moving the mailing address of the MHC closer to the residence of the administrative assistant.

VII. OLD BUSINESS

1. State Fair Coliseum Horseman of the Year Display - Dawn Moore and Judy Jensen presented the concern over returning the picture of Ken Bolman to the HPY display. Discussion followed. Tim Bonham motioned to have Dawn Moore and Judy Jensen pursue returning the picture to the display. Judy Jensen seconded. Discussion followed. Motioned carried unanimously.

2. Animal ID System - Tracy Turner reported this is USDA sponsored animal and premises identification to be held in an independent bank. This information is to be used to track disease in the event of an outbreak.

3. Follow up on the Racino support letter - Tom Tweeten prepared a press release for Mark Ward to sign. Mark Ward advised that the MHC has been approached for the MHC membership list. He has refused their offer to mail all our members a form letter supporting the Racino at this time. Tim Bonham motioned to invite this group to submit an article to our newsletter regarding this topic. Tim Bonham withdrew his motion. Tracy Turner motioned to email all members with an email address listed with MHC a link to the Racino website to lend their support if they so choose. Carol Dobbelaire seconded and asked to amend the motion to include the MHC Racino support letter on the website. Amendment accepted. Motioned carried. Tracy Turner will speak with the Racino contact individual and draft the email.

VIII. Committee Reports

A. EXPO - With the 2009 Minnesota Horse Expo only a few days away everything is in fine shape. The request for Vendor Booths and Horse Stalls

picked up in the last month and although we may not fill all of the outside Vendor Booths most all other booths will be full. The stalls in the Horse Barn are mostly occupied. The program went to print on Monday April 6th with fewer pages because of less ads mainly because of the economy. Promotion is in high gear with ads in trade newspapers and soon will have ads on radio and TV. Channel nine will have ads during news broadcast starting Wednesday, April 15. Set up starts with getting everything out of the locker on Tuesday, April 21 and the earnest setup starts Wednesday, April, 21st. The Expo Event Office will open at 8:00 Wednesday, April 22nd. A hospitality room is being set up in the FFA room of the CHS Birthing Building for Council, Expo Staff and Clinicians only. This is a room only to relax and have some good food prepared by the wife of one of our Expo and Council Directors.

The proposed Board of Directors for the 2010 Minnesota Horse Expo to be held April 23, 24, and 25th at the Minnesota State Fairgrounds are Mark Ward, Missie Schwartz, Glen G. Eaton., Linda Dahl, Brenda Miller, Del Bauernfeind, Laura Lyseng, Darrell Mead, Jennifer Buskey, and Tracy Turner. I am one person short from the Council and a notice was sent out that should anyone who would want to join the Expo Board of Directors from the Council other than those already on the Board to call me. I have not received any calls so if no one else wants to come on the Expo Board at this time we will get along with five from the Council until someone comes forward. Carol Dobbelaire volunteered to fill this vacancy.

B. Direct Funding**Direct Funding Committee Report Proposals to be considered today:****1. Minnesota High School Equestrian Association**

Laura Moran, Executive Director

This organization is requesting \$500 to support promotion of its membership and activities via a booth at the upcoming 2009 Minnesota Horse Expo. Funds, if granted, will help to offset the costs of booth rental, presentation materials (table and drapes), and a presentation banner displaying organization information and sponsor names.

2. Southern Valley Alliance for Battered Women

Shannon Bruce

This organization is requesting \$500 to support development of brochures and an informational web page for their Equine Therapy pilot program designed for victims of domestic violence. They have partnered with MN LINC in development of their curriculum and plan to initiate services in the Twin Cities area by autumn 2009.

Proposals approved at the prior meeting:**1. University of Minnesota Horse Extension Program**

Krishona Martinson and Julie Wilson

This organization was awarded \$500 to support hard-copy color printing of a 4-page fact sheet entitled "Equine Economics: Optimizing Horse Health and Management on a Budget". Approximately 500 copies will be printed, of which 250 will be distributed at the upcoming 2009 Minnesota Horse Expo. An additional 100 copies will be distributed to Minnesota humane agents dealing with abused and neglected horses, and the remaining copies will be distributed in the fall at Equine Extension Programs held throughout the state.

Direct Funding proposals approved for 2009 to date:

Rum River Equestrian Farm/Sheriff's Youth Programs of Minnesota: \$500

Run Fast... Ride Hard Saddle Club: \$500

University of Minnesota Horse Extension Program: \$500

Total Direct Funding approved for 2009: \$1500 to date

C. Promotions - Teresa Hanson reported the following: The MHC attended the Central MN Horse Fest in St. Cloud April 4th and 5th. We arrived Friday April 3rd to set up. The crowds were pretty good all weekend. We gave away a free MHC mug with a paid membership, and got 6 new memberships. We also had a drawing for a MHC jacket. Most of the questions over the weekend pertained to horse trails and the trail users pass. Had a lot of people interested in becoming Certified Stables and gave them the necessary information to get started. Thank you to all the directors that came to the event and helped in the booth. Your time is appreciated!

For the MN Horse Expo special feature insert in the St. Paul Pioneer Press, the MHC placed a 1/8 page ad, which cost a little over \$1400. This is the same arrangement as last year. A copy will be passed around for you to see. All other advertising in various magazines promotes the MN Horse Expo. The MN Horse Expo booth will be set up Thursday April 23rd, at 12:00. We will have three 8 foot tables and one tall table in the front. The right side of the booth (Trailblazers side), will have the antique collectible display case. The eight foot tables will be divided in half, a total of 6 areas, for the following committees to display their information: Trails, Disaster, Certified Stables, Scholarships, MHC Directors photos, and 4H library. We will have a special area on the front tall table for the UHC literature, and any other new information such as the "AAEP Castration Program" or the "Certification of Rescue Operations Program." Update your information with the printer this week, we will need to get it printed and picked up by next week. Their phone is 763-434-6469 and email is printplusincmn@yahoo.com.

We need volunteers in the booth Friday through Sunday until 5:00. TEAR DOWN WILL BE SUNDAY AT 5:00, PLEASE HELP. A schedule for the booth is attached. Please plan on volunteering your time answering questions and promoting MHC! Two to three hours at a time is best, the time goes very fast when the crowd is heavy. Notify any MHC members you know that would like to volunteer in the booth, they will receive a free mug or t-shirt.

D. Web Oversight/Horsemen's Directory - Mark Ward asked the directors to go to the website and advise of any additions, changes and corrections. He asked that this request be submitted via email and include the addition, change or correction as you would like to see it posted. The Horsemen's Directory is seeing additions daily and several "hits" per day. A job listing feature will be added in the near future.

E. MN Unwanted Horse Committee - Tracy Turner reported there is a change to the castration program title to The Gelding Project. There will be a card with a cost of \$5 issued to the interested individual with the eight parameters needed to qualify for the program, on the backside. Mark Ward requested the committee prepare some information for the MHC website regarding the MN Unwanted Horse Committee and the Gelding Project.

F. SHCAC - Glen Eaton reported a meeting of the Task Force of the Trustees of the American Horse Council and the Task Force from the SHCAC was held March 19th in Indianapolis, In. All members of both task forces were present. The two Task Forces had dinner together the night before to kind of break the ice and this was a good idea. This meeting proved to be very fruitful in many ways. A conference call is planned for April 16th and most likely a couple more before the AHC meeting in Washington DC June 14th through June 17th which Tracy Turner and myself will attend. There is a great possibility that the SHCAC (if the name stays the same) will have member on the Board of Trustees of the AHC Board and a Secretary in the American Horse Council Office for the SHCAC only. We feel everything is moving in the right direction for the States Horse Councils and we will have more Councils join the SHCAC.

G. Trails - Darrell Mead reported there has been a group hired to do an economic impact study regarding the use of MN trails. The Trail committee will be issuing \$1000 to support the impact study project.

H. Disaster - Mark Ward motioned to add an additional \$2,000 to the 2009 disaster budget. Christie Ward seconded, motion carried. Around March 27th I received word that the Fargo Horse Park needed help with hay. Our team went into action. We called our source in Breckenridge, MN for help and they had some hay left from last year so we bought a load of hay from her and their farm was donating a load as well to another site, which was the Fargo Fairgrounds.

There were at least 80 horses, 1 goat and 2 pot belly pigs at the Fairgrounds and at the Horse Park they had at least 200 Minnesota flooded out horses. We thought the loads of hay would help out for a while and

it did. The Horse Park seemed to have been getting donations from all over the place for grain, hay, etc. so they ended up not needing much from us after the first load. Breckenridge and MHC donated 2 loads of straw for bedding.

I went up to Fargo on Good Friday, April 9th, and took pictures of the Horse Park and the Fairgrounds. About half of the 200 at the Park were used to being outside and herded in groups. The horses at the Fairgrounds were stalled in the horse barn and half of the indoor arena. I put together the pictures on a storyboard for Horse Expo in April. One lady saw the pictures and pointed at one of the pictures of the Park and said "That's my horse!" Who would have figured?

About a week after April 9th we got a call from the Fairgrounds saying they were running out of hay and if they could get more hay but this time grass hay and not the alfalfa hay that we had gotten before. I called Breckenridge and they asked all the folks they knew that sold hay if there was any grass hay left...the answer was "no." That very afternoon I called Rick Dobbelaire, around 2 pm, and by 3:30 pm he called back and said that someone he knew had grass hay and had called the Fairgrounds to make sure this kind would be ok...it was. So within the next 1-1/2 days Ken and Rick loaded up 22 medium sized round bales and went to Fargo and dropped it off. It took them quite a while to get there so all they saw were the horses in the barn where they left the hay and didn't get to see the horses in the arena.

About 2 weeks ago the family called again and said they were being 'evicted' from the Fairgrounds because they needed to get ready for the show season so ready or not they had to take their horses back home but they need some more hay. I talked it over with members of the team and few officers about it and we all agreed that this would be the last load of hay we would be able to donate. So Rick and Ken got some hay from another source and drove up to Moorhead and unloaded the hay in the rain. I asked if Rick would tell the head of the family that this is the last load of hay that the MHC would be able to help them out with. If the man wants to buy hay there are good sources through Ken and Rick and Teresa's friend Duane.

Thank you Rick for all the help you have been to the team in finding more hay and going to Fargo and Moorhead on those 2 trips. Thank you Teresa/Duane for a good source of hay offer as well.

IX. NEW BUSINESS

1. Bylaw changes - presented by Mark Ward. Jan Schatzlein motioned to accept the new by-laws to be voted on by the membership at the annual meeting. Carol Dobbelaire seconded, motion carried.

2. MHC document acquisition and storage - Mark Ward emailed all directors advising of the new document storage on the internet. Mark Ward asked for directors to review the information on the website and advise him of any other documents that may need to be added.

3. Arden Hills Olympic Equestrian Center proposal - Mark Ward reported there is a potential for having a horse facility for the 2020 Olympic games. The group working on this project has requested the MHC offer their endorsement for this Equestrian Center. The board asked for a presentation on this project by the individuals involved in the month of May.

4. U of MN Dean's Advisory Council update - U of MN representatives Kelly Vallandingham (Community Liason) and Stephanie Valberg (director of U of MN Equine Center) reported there is a lack of housing for the horses brought for clinics, programs, etc. The increase in research being performed by the University has also created a strain on the available housing for these animals. The University is considering adding two Triton barns to accommodate the increase in horses on the grounds. These barns will be insulated for year-round use and house a total of twenty 10 x 10 stalls. The estimated cost for these two barns is \$100,000. Preparing the ground, water and electric will be an additional fee. There has been \$25,000 raised for this project to date. The U of MN is asking the MHC for the \$75,000 needed to meet the budget for the new barns.

5. Insurance coverage, including liability for officers and directors, also bonding for president and treasurer. Mark Ward reported that after investigation into this matter, advises that the MN Horse Expo has coverage that covers the MHC board. Mark Ward is requesting a copy for the MHC.

6. Van Ness Award - Glen Eaton requested that a letter be drawn up for the nominee as he feels it carries more weight than simply sending in the form. Glen Eaton nominates Darrell Mead. The board will support this nomination.

7. Policies and Procedures - Mark Ward reported that he had difficulty finding the information on the MHC policies and procedures. Trina Joyce has a complete copy that will be added to the password protected portion of the MHC website. Mark Ward asked the chairs of the newly created committees to start preparing the policies and procedures for their committees.

X. OTHER

XI. ADJOURNED at 9:23 PM

NEXT MEETING May 12, 2009, 6:30 pm,
University of MN, Leatherdale Equine Center

Ask The Vet: Traveling With Your Horse



Dr. John Poe answers questions on the topic of traveling with your horse. See www.aaep.org for all his answers.

Every trail rider or horse hauler should have an emergency pack on hand. Dr. Poe suggests the following:

1) Flunixin meglumine bottle or paste formulation: using the label dosage of 50 mg/1 cc for every 100 pounds of body weight given intravenously, intramuscularly or orally if paste. Good for that sudden belly ache or high fever.

2) Phenylbutazone paste (12 gram tube): labeled dosage at 1 to 2 grams per 500 pounds of body weight orally. Good for that tender footed horse after a very long trail ride on hard ground.

3) Acepromazine maleate is also good to have handy if somebody's horse gets nervous. Dose at 1 to 5 ml per 1000-1200 pound horse IV, IM or orally and is most effective if used before the horse gets excited.

4) Standing clean to sterile leg bandage for that emergency leg laceration with some brown gauze and/or stretchy bandaging material.

5) Consulting your own private practitioner when away from home is a suggestion if applicable and you can get cell phone coverage for extra advice and consultation when away from home with a challenging situation.

6) A handful of 12 cc syringes and 18 gauge 1.5 inch needles.

7) A large animal Thermometer for that quick health assessment.

First aid kits can be simple or elaborate, but there are some essential items that you will also need to keep in mind. You may also find additional information by reading AAEP's health brochure: Guidelines to Follow During Equine Emergencies. This brochure may be found on-line in the Health Articles section under First Aid/Emergency Care section of www.aaep.org/horseowner.

2009 MEETING SCHEDULE

View www.mnhorsecouncil.org and
www.minnesotahorsemensdirectory.org for additional events

Minnesota Horse Council Board Meetings

Leatherdale Equine Center Center ♦ 6:30 pm
1801 Dudley Ave ♦ St, Paul
Located on the U of M St. Paul Campus

February 10	June 9	October 13
March 10	July 14	November 10
April 7	August - No meeting	December 8
May 12	September 8	
January 16, 2010 - Annual Meeting - Northland Inn		

Minnesota Horse Expo Board Meetings

Byerly's Community Room ♦ 6:30 pm
3777 Park Center Drive ♦ St. Louis Park, MN

January 27	May 26	September 29
February 23	June 30	October 27
March 31	July 28	November 24
April 28	August - No meeting	December 29

For Horse's Sake

Editors: Linda Dahl and Missie Schwartz

Publisher: Dahl Graphic Design

888-403-2060 ♦ www.dahlgraphics.com

Missie Schwartz: 763-428-7532 ♦ bmschwartz@msn.com

For Horse's Sake is the official newsletter of the Minnesota Horse Council (MHC). Statements appearing in *For Horse's Sake* are those of the authors and not necessarily those of the MHC. To reprint any material published in *For Horse's Sake*, please notify MHC of your intentions. Full credit needs to be given to the author. Articles of relevance to the equine industry are earnestly solicited. The Minnesota Horse Council is a non-profit member-supported volunteer organization representing all equine disciplines and breeds in Minnesota's equine livestock industry.

Please e-mail or send potential articles to:

Dahl Graphic Design

39257 Taray Road ♦ Pine River, MN 56474

E-Mail: fhs-mhc@dahlgraphics.com

2009 Article Submission Deadlines

January/February	1/23/09	July/August	6/12/09
March	2/13/09	September	8/14/09
April	3/13/09	October	9/11/09
May	4/10/09	November	10/16/09
June	5/15/09	December	11/13/09



MINNESOTA HORSE COUNCIL MEMBERSHIP APPLICATION

- | | |
|--|--|
| <input type="checkbox"/> Individual - \$15 | <input type="checkbox"/> Corporation - \$25 |
| <input type="checkbox"/> Family - \$20 | <input type="checkbox"/> Certified Stable
First Year - \$35 |
| <input type="checkbox"/> Organization - \$25 | <input type="checkbox"/> Certified Stable
Renewal - \$25 |

Name _____

Farm/Business Name _____

Address _____

City/State/Zip _____

Phone _____

Alt. Phone _____

E-mail _____

Website _____

Brief description of your stable/business/involvement with horses:

Would you like to volunteer with MHC? If so, please list any interest you have:

I'd like to receive the MN Horse Council newsletter, "For Horse's Sake" by:

- E-mail (saves on postage and paper)
- United States Postal Service

Please complete this form and send with your check to:

**Minnesota Horse Council
13055 Riverdale Drive ♦ PO Box 212
Coon Rapids, MN 55448**

Minnesota Horse Council



13055 Riverdale Drive
Box 202 ♦ Suite 500
Coon Rapids, MN 55448
763-755-7729
mn.horsecouncil@comcast.net
www.MnHorseCouncil.org

COMMITTEE CHAIRS

Annual Meeting

Dawn Moore ♦ 952-949-6659 ♦ dmoore834@comcast.net

Aisle of Breeds

Glen Eaton ♦ 952-922-8666 ♦ Glen@MnHorseExpo.org

Budget

Mark Ward ♦ 651-436-6557 ♦ markward@windyridgeranch.com

Certified Stables

Sue McDonough ♦ 651-699-8117

Communications

Missie Schwartz ♦ 763-428-7532 ♦ bmschwartz@msn.com

Direct Funding

Christie Ward ♦ 651-603-8702 ♦ malaz002@umn.edu

Disaster Response

Marian Robinson: ♦ 763-588-0297 ♦ mariana_1820@yahoo.com

Expo

Glen Eaton ♦ 952-922-8666 ♦ Glen@MnHorseExpo.org

Facilities

Tom Tweeten ♦ 952-226-4190 ♦ tnt@integraonline.com

Grants

Tim Bonham ♦ 612-721-1007 ♦ t-bonham@scc.net

Horseperson of the Year

Dawn Moore ♦ 952-949-6659 ♦ dmoore834@comcast.net

Inventory/Storage

Glen Eaton ♦ 952-922-8666 ♦ Glen@MnHorseExpo.org

Legislative

Tracy Turner ♦ 651-351-7206 ♦ turner@anokaequine.com

Minnesota Horsemen's Directory

Mark Ward ♦ 651-436-6557 ♦ markward@windyridgeranch.com

Nominations

Mark Ward ♦ 651-436-6557 ♦ markward@windyridgeranch.com

Pioneer Award

Dawn Moore ♦ 952-949-6659 ♦ dmoore834@comcast.net

Promotions

Teresa Hanson ♦ 763-434-2799 ♦ trhanson2@hotmail.com

Scholarships

Trina Joyce ♦ 612-729-7798

Trail Blazers

Darrell Mead ♦ 763-420-3697 ♦ darrellmead@comcast.net

State Horse Council

Glen Eaton ♦ 952-922-8666 ♦ Glen@MnHorseExpo.org

Administrative Assistant - Andrea Dubay ♦ 763-755-7729
mn.horsecouncil@comcast.net

In This Issue

Another Fantastic Year at Expo!.....	1
More Expo Pictures.....	2
A Message to Horse Owners.....	3
Equine Economics: Optimizing Horse Health and Management on a Budget.....	4
Unwanted Horse Veterinary Relief Campaign Aids More Than 1,400 Horses.....	5
U of M Extension Events.....	5
Get a DVM.....	5
AHC Action Alert.....	6
AHC Urges Land Managers to Use Stimulus Funding for Equestrian Trails.....	6
Littlefork Saddle Club Announcer's Stand Gets a Makeover with MHC Grant.....	7
MHC April Board Minutes.....	8
Ask the Vet: Traveling With Your Horse.....	10
2009 Meeting Schedule.....	10
MHC Membership Application.....	11
MHC Committee Chairs.....	11



Minnesota Horse Council

13055 Riverdale Drive
Box 202 ♦ Suite 500
Coon Rapids, MN 55448

Return Service Requested

